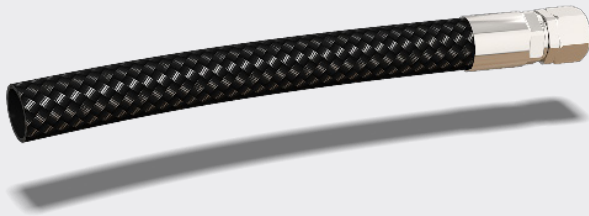


## FLUID TRANSFER SYSTEMS

Fluoro-comp<sup>+</sup>

### Product Description

Kongsberg Automotives patented Fluoro-comp<sup>+</sup> hose is a non-metallic reinforced PTFE hose for applications which require extreme temperature capabilities and extreme burn-through-resistance and gives you the market leading performance and properties of a PTFE hose but with the ease of forming and routing of a Nylon or rubber hose. This hose is achieving a greater than 60 minutes performance in DIN 73379-3 Flame test.



### Properties

<b>Application</b>	applications that require best-in-class safety and superior flame-through-resistance under demanding conditions
<b>Design</b>	Smoothbore PTFE tube with integral PTFE impregnated glassfibre braid
<b>Inner layer</b>	Smoothbore PTFE tube, conductive
<b>Outer layer</b>	Double-braided-layer of bonded, non-metallic, PTFE-impregnated
<b>Temperature Min</b>	-40°C
<b>Temperature Max</b>	+260°C
<b>Material</b>	PTFE according to "ISO12086, Part1. PTFE-E.P.D.M 1.61.C.E.4_12"

### Fluoro-comp<sup>+</sup> Range

USA Part Number	Part Number	Description	Tube Wall Thickness Nom.		Tolerance +/-		Braid ID Nominal		Tolerance +/-		Max. Working Pressure		Min. Burst Pressure		Min. Bend Radius	
			(mm)	(in)	(mm)	(in)	(mm)	(in)	(mm)	(in)	(psi)	(bar)	(psi)	(bar)	(mm)	(in)
TFH2001-050	TFH2001-050	1/4" Fluoro-comp+	2,13	0,084	0.20	0.008	6.40	0.252	0.41	0.016	1,000	69	6,200	427	51	2.000
TFH2001-060	TFH2001-060	5/16" Fluoro-comp+	2,57	0,101	0.20	0.008	7.85	0.309	0.41	0.016	1,000	69	7,300	503	76	3.000
TFH2001-070	TFH2001-070	3/8" Fluoro-comp+	3,25	0,128	0.20	0.008	9.42	0.371	0.41	0.016	750	52	6,100	421	89	3.500
TFH2001-080	TFH2001-080	7/16" Fluoro-comp+	3,33	0,131	0.20	0.008	10.92	0.430	0.41	0.016	750	52	3,000	207	102	4.000

### Additional Information

Fluoro-comp<sup>+</sup> has a double layer of reinforcement consisting 90% fiber glass with 10% aramid fiber. This double layer of braid, provides enhanced thermal insulation and improved burn-through-resistance compared to our standard Fluorocomp-product. It also provides improved robustness, abrasion resistance and cut resistance while maintaining same preform-radius and routing-capability.

### Note

Forming of the patented Fluoro-comp<sup>+</sup> hose is done by Kongsberg Automotive to our customers specification. Please contact our sales team for more information on these products.