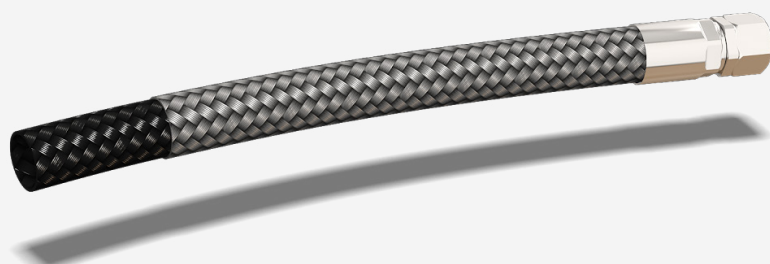




KONGSBERG
AUTOMOTIVE

LifeFlex+



PROPERTIES

APPLICATION	HIGH PERFORMANCE HOSE, USED IN THE MOST ROBUST APPLICATIONS DUE TO IT'S AVERSION TO KINKING
DESIGN	SMOOTHBORE PTFE TUBE WITH INTEGRAL PTFE IMPREGNATED GLASSFIBRE BRAID AND SS OUTER BRAID
INNER LAYER	SMOOTHBORE PTFE TUBE WITH INTEGRAL PTFE IMPREGNATED GLASSFIBRE BRAID
OUTER LAYER	HIGH TENSILE 304 MAYPOLE WOUND STAINLESS STEEL BRAID
TEMPERATURE MIN/MAX	-60°C TO +260°C (-76°F TO +500°F)
MATERIAL	PTFE ACCORDING TO "ASTM D4895,TYPE 1, GRADE4, CLASS B

PRODUCT DESCRIPTION

Kongsberg Automotive's patented smoothbore Fluorocomp® product, given a robust edge with a high tensile stainless-steel outer braid. Re-validated with vastly improved minimum bend radius data, which gives excellent routability and high performance due to its aversion to kinking.



EUROPE: FOXBRIDGE WAY, NORMANTON, WEST YORKSHIRE, WF6 1TN, UNITED KINGDOM // T: +44 1924 228000

NORTH AMERICA: ONE FIRESTONE DRIVE, SUFFIELD, CT 06078, UNITED STATES // T: +1 860 668 1285

CHINA: NO.30 & 32, XIKUNRD, WUXI SINGAPORE IND. PARK, WUXI, JIANGSU PROVINCE P.R CHINA, 214028 // T: +86 510 8528 5903



YOUR FLEXIBLE PTFE HOSE PARTNER // WWW.KAHOSE.COM

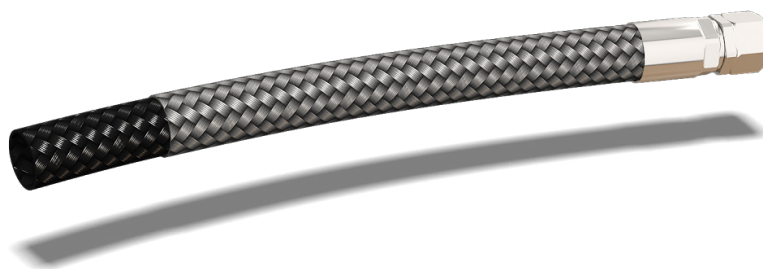


LIFEFLEX+ RANGE

PART NUMBER	DESCRIPTION	ID NOMINAL		TOLERANCE		OD NOMINAL		TOLERANCE		TUBE WALL THICKNESS NOM.		MAX. WORKING PRESSURE		MIN. BURST PRESSURE		MIN. BEND RADIUS	
		(mm)	(in)	(mm)	(in)	(mm)	(in)	(mm)	(in)	(mm)	(in)	(psi)	(bar)	(psi)	(bar)	(mm)	(in)
T1764-04	3/16" LIFEFLEX+	4,91	0,19	0,29	0,01	9,58	0,38	0,57	0,02	0,71	0,03	4000	276	16000	1103	17	0,67
T1764-05	1/4" LIFEFLEX+	6,27	0,25	0,25	0,01	11,18	0,44	0,51	0,02	0,71	0,03	3500	241	14000	965	26	1,02
T1764-06	5/16" LIFEFLEX+	7,35	0,29	0,39	0,02	13,17	0,52	0,39	0,02	0,71	0,03	3500	241	14000	965	37	1,46
T1764-07	3/8" LIFEFLEX+	8,64	0,34	0,38	0,02	14,53	0,57	0,51	0,02	0,71	0,03	3000	207	12000	827	40	1,57
T1764-08	7/16" LIFEFLEX+	10,57	0,42	0,51	0,02	16,23	0,64	0,51	0,02	0,71	0,03	2500	172	10000	689	52	2,05
T1764-10	1/2" LIFEFLEX+	12,75	0,50	0,51	0,02	19,15	0,75	0,51	0,02	0,76	0,03	1800	124	7200	496	64	2,52
T1764-12	5/8" LIFEFLEX+	14,99	0,59	0,51	0,02	21,95	0,86	0,51	0,02	0,84	0,03	1500	103	6000	414	87	3,43
T1764-14	7/8" LIFEFLEX+	19,56	0,77	0,51	0,02	25,37	1,00	0,64	0,03	0,86	0,03	1400	97	5600	386	108	4,25
T1764-16	1" LIFEFLEX+	21,91	0,86	0,57	0,02	29,85	1,18	0,89	0,04	0,86	0,03	1200	83	4800	331	178	7,00
T1764-18	1 1/16" LIFEFLEX+	25,53	1,005	0,64	0,025	35,69	1,405	0,89	0,035	0,86	0,03	1000	69	4000	276	229	9,00

LIFEFLEX+ CONDUCTIVE RANGE

PART NUMBER	DESCRIPTION	ID NOMINAL		TOLERANCE		OD NOMINAL		TOLERANCE		TUBE WALL THICKNESS NOM.		MAX. WORKING PRESSURE		MIN. BURST PRESSURE		MIN. BEND RADIUS	
		(mm)	(in)	(mm)	(in)	(mm)	(in)	(mm)	(in)	(mm)	(in)	(psi)	(bar)	(psi)	(bar)	(mm)	(in)
T1765-04	3/16" LIFEFLEX+ CONDUCTIVE	4,91	0,19	0,29	0,01	9,58	0,38	0,57	0,02	0,71	0,03	4000	276	16000	1103	17	0,67
T1765-05	1/4" LIFEFLEX+ CONDUCTIVE	6,27	0,25	0,25	0,01	11,18	0,44	0,51	0,02	0,71	0,03	3500	241	14000	965	26	1,02
T1765-06	5/16" LIFEFLEX+ CONDUCTIVE	7,35	0,29	0,39	0,02	13,17	0,52	0,39	0,02	0,71	0,03	3500	241	14000	965	37	1,46
T1765-07	3/8" LIFEFLEX+ CONDUCTIVE	8,64	0,34	0,38	0,02	14,53	0,57	0,51	0,02	0,71	0,03	3000	207	12000	827	40	1,57
T1765-08	7/16" LIFEFLEX+ CONDUCTIVE	10,57	0,42	0,51	0,02	16,23	0,64	0,51	0,02	0,71	0,03	2500	172	10000	689	52	2,05
T1765-10	1/2" LIFEFLEX+ CONDUCTIVE	12,75	0,50	0,51	0,02	19,15	0,75	0,51	0,02	0,76	0,03	1800	124	7200	496	64	2,52
T1765-12	5/8" LIFEFLEX+ CONDUCTIVE	14,99	0,59	0,51	0,02	21,95	0,86	0,51	0,02	0,84	0,03	1500	103	6000	414	87	3,43
T1765-14	7/8" LIFEFLEX+ CONDUCTIVE	19,56	0,77	0,51	0,02	25,37	1,00	0,64	0,03	0,86	0,03	1400	97	5600	386	108	4,25
T1765-16	1" LIFEFLEX+ CONDUCTIVE	21,91	0,86	0,57	0,02	29,85	1,18	0,89	0,04	0,86	0,03	1200	83	4800	331	178	7,00
T1765-18	1 1/16" LIFEFLEX+ CONDUCTIVE	25,53	1,005	0,64	0,025	35,69	1,405	0,89	0,035	0,86	0,03	1000	69	4000	276	229	9,00



EUROPE: FOXBRIDGE WAY, NORMANTON, WEST YORKSHIRE, WF6 1TN, UNITED KINGDOM // T: +44 1924 228000

NORTH AMERICA: ONE FIRESTONE DRIVE, SUFFIELD, CT 06078, UNITED STATES // T: +1 860 668 1285

CHINA: NO.30 & 32, XIKUNRD, WUXI SINGAPORE IND. PARK, WUXI, JIANGSU PROVINCE P.R CHINA, 214028 // T: +86 510 8528 5903



YOUR FLEXIBLE PTFE HOSE PARTNER // WWW.KAHOSE.COM